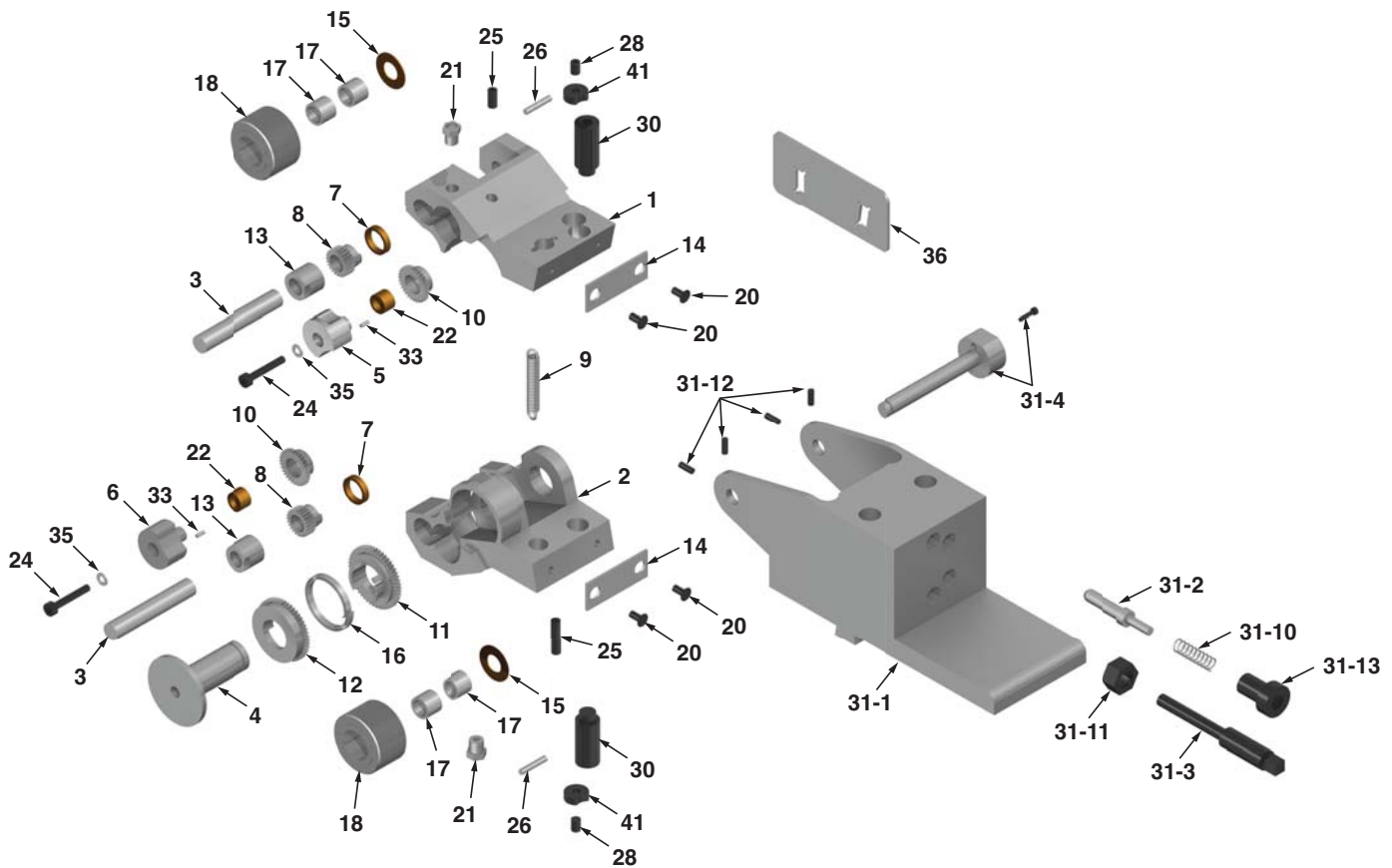


RT-30 - Tangential Head Component Parts Breakdown



Item #	EDP	Description	Qty
1	30-001	Upper Arm	1**
2	30-002	Lower Arm	1
3	30-003	Shaft	2
4	30-004	Center Shaft	1
5	30-005	Bushing	1
6	30-006	Bushing	1
7	30-007	Bearing Bushing	2
8	30-008	Pinion	2
9	30-009	Tension Spring	1
10	30-010	Gear w/Bushing	2
11	30-011	Gear (assy w/12 & 16 only)	0**
12	30-012	Gear w/Coil Spring	1
13	30-013	Carbide Bushing	2
14	30-014	Plate	2

Item #	EDP	Description	Qty
15	30-015	Thrust Washer	2
16	30-016	Coil spring (assy w/11 & 12)	1
17	30-017	Bushing	4
20	30-020	Flat Head Scr.	4
21	30-021	Grease Nipple	2
22	30-022	Bearing Bushing	2
24	30-024	Cap Screw	2
25	30-025	Cap Screw	2
26	30-026	Straight Pin	2
27	30-027	Set Screw	1
28	30-028	Set Screw	2
30	30-030	Adj. Set Screw	2
31	30-031	Attachment Holder Complete	1▼
31-1	30-031-1	Housing	1▼

Item #	EDP	Description	Qty
31-2	30-031-2	Spring Loded Bolt	1
31-3	30-031-3	Stop Bolt	1
31-4A	30-031-4A	Bolt	1
31-4B	30-031-4B	Bolt	1
31-10	30-031-10	Thrust Spring	1
31-11	30-031-11	Hex Nut	1
31-12	30-031-12	Set Screw	2
31-13	30-031-13	Cap Screw	1
32	30-032	Setting Gauge	1▼
33	30-033	Slotted Pin	2
35	30-035	Schnorr Clip	2
36	30-036	Sheet Metal Gauge	1
41	30-041	Lock Washer	2

Sold as an assembly only

(#1 & #2 Arm Assy) (#11,12 & 16 gear w/Coil Spring Assy)

▼ Per Application



RSVP Tooling, Inc.

Toll Free: 888-289-7787 • Direct: 815-725-3310

Fax: 815-725-3391 • Email: sales@rsvptooling.com

www.rsvptooling.com