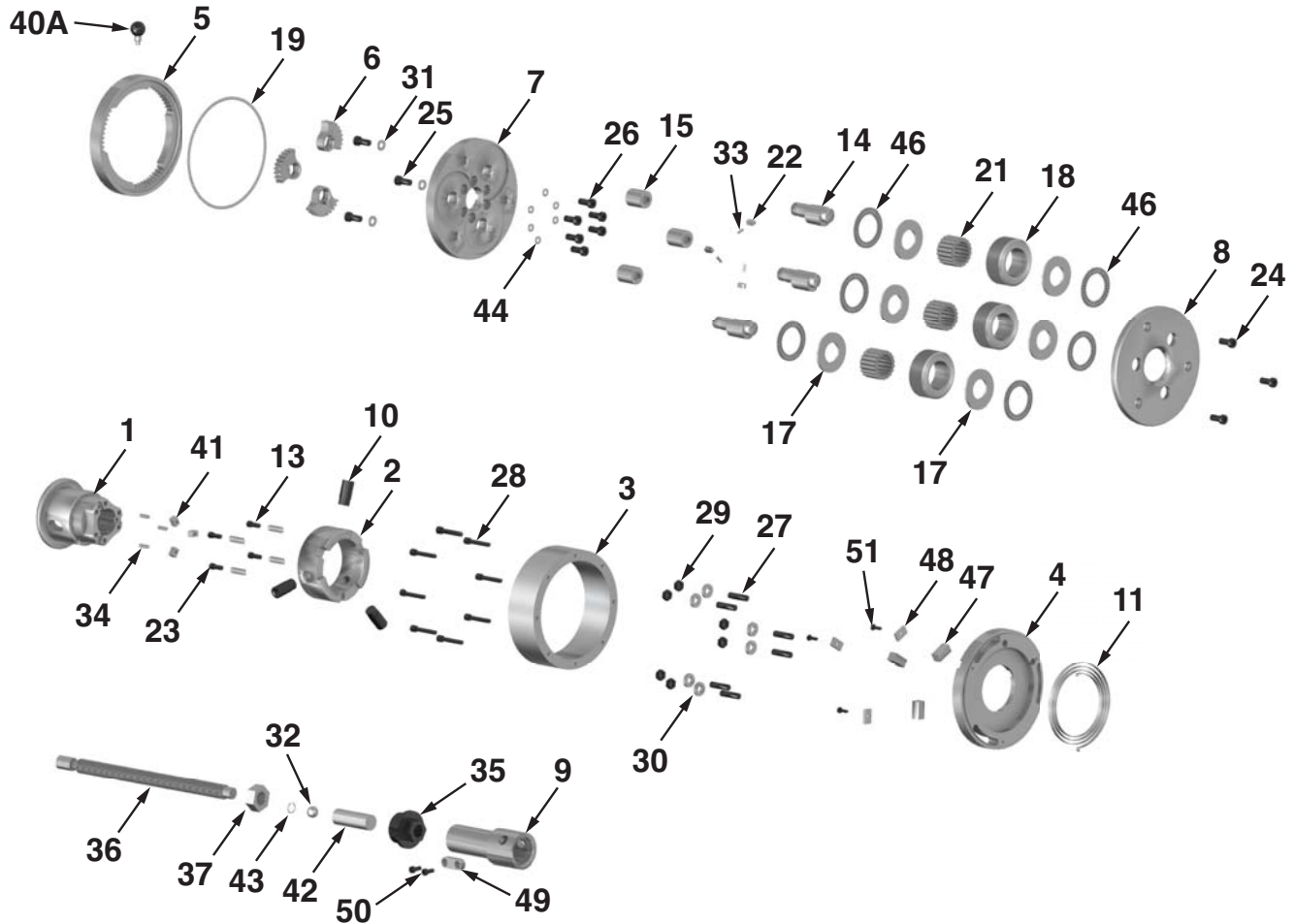


# A45 - Axial Head Component Parts Breakdown



| Ref | Qty | Description        | EDP    |
|-----|-----|--------------------|--------|
| 1   | 1   | Flange             | 4-001  |
| 2   | 1   | Clutch             | 4-002  |
| 3   | 1   | Operating Ring     | 4-003  |
| 4   | 1   | Spring Housing     | 4-004  |
| 5   | 1   | Gear Ring          | 4-005  |
| 6   | 3   | Gear Sectors       | 45-006 |
| 7   | 1   | Center Plate       | 45-007 |
| 8   | 1   | Front Plate        | 45-008 |
| 9   | 1   | Shank 1-1/2        | 4-009  |
| 9A  | 1   | Shank 2"           | 4-009A |
| 9B  | 1   | Shank 40mm         | 4-009B |
| 9C  | 1   | Shank 50mm         | 4-009C |
| 10  | 1   | Pin                | 4-010  |
| 11  | 1   | Coil Spring        | 4-011  |
| 13  | 4   | Spring Pin         | 4-013  |
| 14  | 3   | Eccentric Spindles | 45-014 |
| 15  | 3   | Spacer Studs       | 45-015 |
| 17  | 6   | Axial Washer       | 45-017 |

| Ref | Qty | Description                               | EDP   |
|-----|-----|---|-------|
| 18  | 3   | Thread Roll<br>(See Chart for Size & EDP) |       |
| 19  | 116 | Steel Ball                                | 4-019 |
| 21  | 54  | Needle Roller Bearings                    | 7368  |
| 21* | 3   | Carbide Bushing                           | 1460  |
| 22  | 3   | Fitting Key                               | 4-022 |
| 23  | 4   | Pressure Ring                             | 4-023 |
| 24  | 3   | Cap Screw                                 | 4-024 |
| 25  | 3   | Cap Screw                                 | 4-025 |
| 26  | 6   | Cap Screw                                 | 4-026 |
| 27  | 6   | Stud                                      | 4-027 |
| 28  | 8   | Cap Screw                                 | 4-028 |
| 29  | 6   | Hex Nut                                   | 4-029 |
| 30  | 6   | Washer                                    | 4-030 |
| 31  | 3   | Lock Washer                               | 4-031 |
| 32  | 1   | Steel Ball                                | 4-032 |
| 33  | 3   | Shear Pins                                | 4-033 |
| 34  | 3   | Roll Pins                                 | 4-034 |

| Ref | Qty | Description        | EDP    |
|-----|-----|--------------------|--------|
| 35  | 1   | Stop Screw Body    | 4-035  |
| 36  | 1   | Stop Screw Body    | 4-036  |
| 37  | 1   | Hex Nut            | 4-037  |
| 39  | 1   | Hex Nut            | 4-039  |
| 40A | 1   | Handle Assy.       | 4-040A |
| 41  | 3   | Fitting Key        | 4-041  |
| 42  | 1   | Rotating End Stop  | 4-042  |
| 43  | 1   | Circlip            | 4-043  |
| 44  | 6   | Circlip            | 4-044  |
| 46  | 6   | Axial Bearing Cage | 45-046 |
| 47  | 3   | Clutch Wedge       | 4-047  |
| 48  | 3   | Cover Plate        | 4-048  |
| 49  | 1   | Fitting Key        | 4-049  |
| 50  | 2   | Cap Screw          | 4-050  |
| 51  | 3   | Cap Screw          | 4-051  |

(\*) #21 Needle Bearings are provided as standard. Optional Carbide Bushings provided at additional cost upon request.



**RSVP Tooling, Inc.**

Toll Free: 888-289-7787 • Direct: 815-725-3310

Fax: 815-725-3391 • Email: sales@rsvptooling.com

www.rsvptooling.com