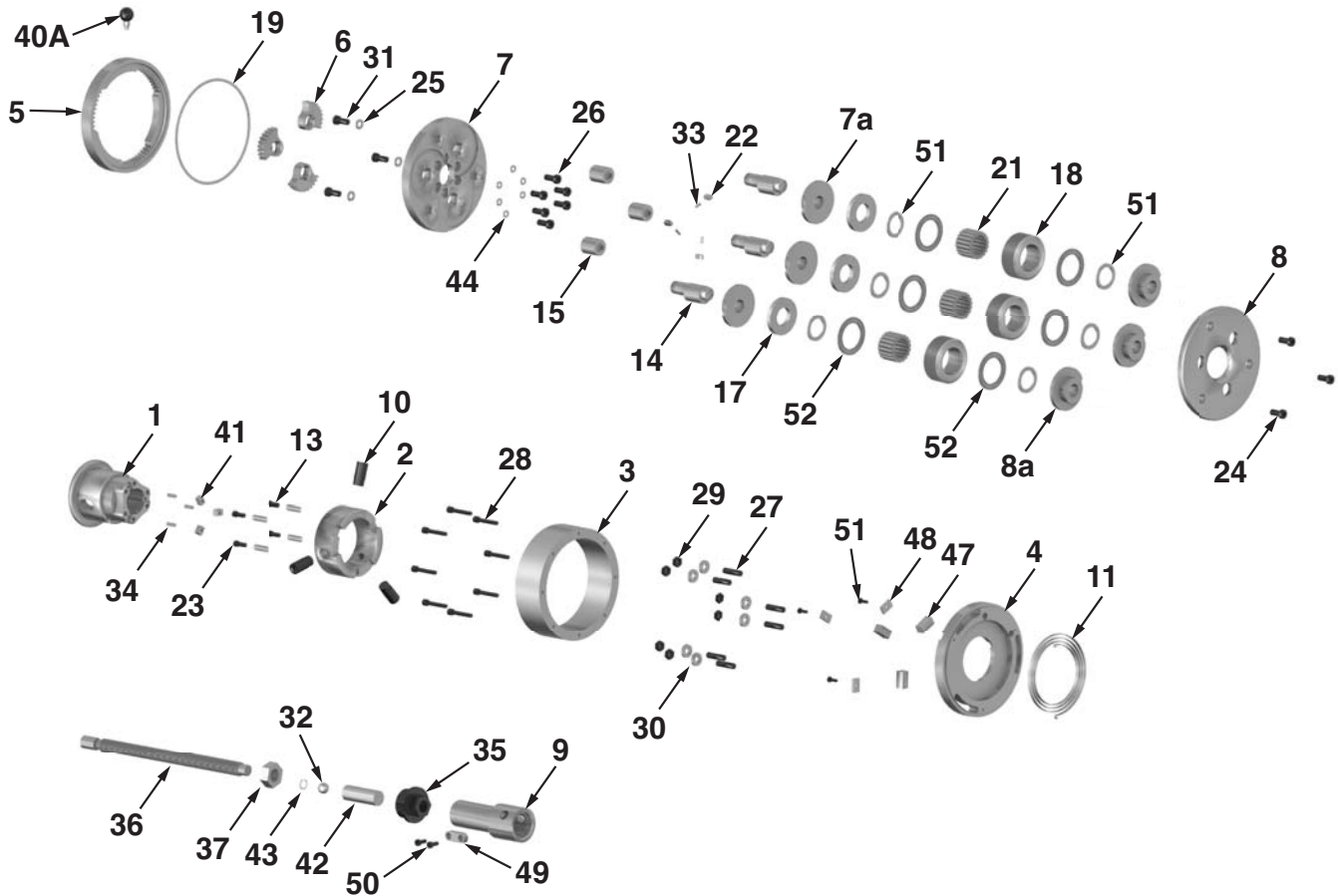


A56 - Axial Head

Component Parts Breakdown



Ref	Qty	Description	EDP
1	1	Flange	5-001
2	1	Clutch	5-002
3	1	Operating Ring	5-003
4	1	Spring Housing	5-004
5	1	Gear Ring	5-005
6	3	Gear Sectors	56-006
7	1	Center Plate	56-007
7a	3	Center Plate Bushing	56-007a
8	1	Front Plate	56-008
8a	3	Front Plate Bushing	56-008a
9	1	Shank 2"	5-009
9A	1	Shank 2-1/4	5-009A
9B	1	Shank 2-1/2	5-009B
9C	1	Shank 50mm	5-009C
9D	1	Shank 60mm	5-009D
10	1	Pin	5-010
11	1	Coil Spring	5-011
13	3	Spring Pin	5-013

Ref	Qty	Description	EDP
14	3	Eccentric Spindles	56-014
15	3	Spacer Studs	56-015
17	3	Washer	56-017
18	3	Thread Roll (See Chart for Size & EDP)	
19	145	Steel Ball	5-019
21	57	Needle Roller Bearings	4-021
21*	3	Carbide Bushing	1462
22	3	Fitting Key	5-022
23	3	Pressure Ring	5-023
24	3	Cap Screw	5-024
25	3	Cap Screw	5-025
26	6	Cap Screw	5-026
27	6	Stud	5-027
28	8	Cap Screw	5-028
29	6	Hex Nut	5-029
30	6	Washer	5-030
31	3	Lock Washer	5-031

Ref	Qty	Description	EDP
32	1	Steel Ball	5-032
33	3	Shear Pins	5-033
34	3	Roll Pins	5-034
35	1	Stop Screw Body	5-035
36	1	Stop Screw Body	5-036
37	1	Hex Nut	5-037
39	3	Clutch Wedge	5-039
40A	1	Handle Assy.	5-040A
41	3	Fitting Key	5-041
42	1	Rotating End Stop	5-042
43	1	Circlip	5-043
44	6	Circlip	5-044
48	3	Cover Plate	5-048
49	1	Fitting Key	5-049
50	2	Cap Screw	5-050
51	6	Centering Ring	56-051
52	6	Axial Bearing Cage	56-052
54	3	Cap Screw	5-054

(* #21 Needle Bearings are provided as standard. Optional Carbide Bushings provided at additional cost upon request.



RSVP Tooling, Inc.

Toll Free: 888-289-7787 • Direct: 815-725-3310

Fax: 815-725-3391 • Email: sales@rsvptooling.com

www.rsvptooling.com