

How To Use This Catalog

Welcome To The RSVP Tooling Interactive Catalog Section

Clickable & Touch Links

Within each page we have included a wide range of links that can be click when viewed on a computer or touched on a smart device (phones and pads).

The side tabs to the left when click will return you to the section index.

On the master index and section indexes the line items also contain links to the indicated pages.

Tangential Index	70
Attachments.....	71
Thread Rolls & Setting Angles.....	72
Design of Rolls	73
RT10 - RT20 - RT30 Overview & Components....	74 - 75
Tangential Charts	76 - 77

Downloading this catalog to a smart device - phones or pads

This catalog can be viewed on smart devices such as phones and pads. Most free PDF viewers will allow you to flip from page to page.



However, if you would like to take advantage of the built in interactive features you will need to download an app.



We have reviewed many apps and have found that “ezPDF Reader” seems to work the best on both the Apple and Droid product lines. It is available in two forms - one for the pads and one for the phones.

Start by going to your apps download center on your device. Search for “ezPDF Reader” and look for the above icon. Purchase the app that matches your device (at the time this catalog was created ezPDF reader was selling for \$2.99). Download and activate the app.

To download the RSVP Tooling Catalog follow the “ezPDF Reader” instructions to download a file from the internet to the app. On the home screen of “ezPDF Reader” select “URL Download” and enter the following URL - “http://www.rsvptooling.com/RSVPcatalog.pdf”. Once the catalog is loaded to “ezPDF Reader” you can start using the interactive features.

Icon Links



Click this icon to follow and like RSVP Tooling on Facebook. Get the most up-to-date information on products, training, videos and products for your smart devices.



Click this icon to follow our short RSVP tweets. Quick tips and helpful links to increase your threading quality and productivity.



Click this icon to expand your network of professional contacts.



Click this icon to visit our video channel. When this icon is next to a product you can directly link to a demonstration video.



Click this icon to quickly access our extensive knowledge base within the RSVP Tooling website.



This icon is not active within this PDF.



Click this icon to return to the section index for that product or page.



Zeus Cut Knurling Tools

Knurling without pressure and force.



Unbeatable benefits:

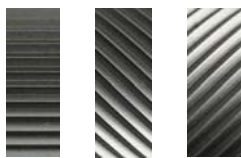
- **Flexible use** for shanks 20 and 25 through vertical adjustment mechanism.
- **High precision** for excellent knurling profiles
- **Modular tool system** for left and right hand orientation with easy tool conversion.
- **Fast and easy head orientation** reduces setting time.
- **Easy tool handling** and adjustment of work piece diameter.
- **Rigid tool design** offers high process safety and excellent knurling quality. Gear tooth system between tool holder and cut knurling head for a steady vibration free process
- **Knurling wheel options:** PVD coatings for increased wheel life
- **Special surface hardening** of the tool shank for increased tool life (nitriding)



**Best Example:
Zeus RF2-A**

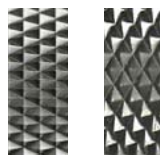
Tool Series:

RF1



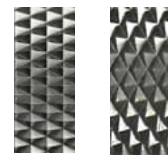
Knurling profiles:
RAA / RBL / RBR

RF2



Knurling profiles:
RGE30° / RGE45°

RF3



Knurling profiles:
RGE30° / RGE45°

Zeus Cut Knurling Tools

Zeus Cut Knurling Wheels guarantee an optimal tool life, high precision & absolute process safety:

- **Teeth fine milled, front and bore ground:** high quality of knurling pattern
- **Vacuum hardened**
- **Knurling wheel options:** PVD coatings for increased wheel life (✓)
- **Exclusive product range**



Form AA



BL 15°



BR 15°



BL 30°



BR 30°

Variations	Type	Ø x width x bore	Pitch p - Profile angle a
No.15 / milled, without chamfer, HSS ✓	AA	8,9 x 2,5 x 4 ✓	0,3 - 90°
No.16 / milled, without chamfer, PM ✓	BL 15°	10 x 3 x 6 ✓	0,4 - 90°
No.17 / milled, with chamfer, HSS ✓	BR15°	14,5 x 3 x 5 ✓	0,5 - 90°
No.18 / milled, with chamfer, PM ✓	BL30°	15 x 4 x 8 ✓	0,6 - 90°
No.35 / ground, without chamfer, PM ✓	BR30°	21,5 x 5 x 8 ✓	0,7
No.37 / ground, with chamfer, PM ✓		25 x 6 x 8 ✓	0,8
No.55 / ground, without chamfer, HM ✓		32 x 13 x 16 ✓	0,9
No.57 / ground, with chamfer, HM ✓		42 x 13 x 16 ✓	1,0
			1,2
			1,5
			1,6
			1,8
			2,0 - 90°

Please choose your options by combining the four columns accordingly.

HSS = High Speed Cutting Steel

PM = Powder metallurgy Steel

HM = Carbide



Specialty Tools

Zeus Form Knurling Tools

Optimal solutions for knurling applications.



Unbeatable benefits:

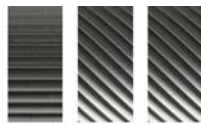
- **High precision** for excellent knurling profiles. Low radial pressure on the work piece
- **Easy tool handling** and adjustment of work piece diameter. With scale for setting the work piece \varnothing
- **Rigid tool design** offers high process safety and excellent knurling quality.
- **Knurling wheel options:** PVD coatings for increased wheel life
- **Special surface hardening** of the tool shank for increased tool life (nitriding)
- **Application oriented** tool solutions. Suitable for small machines and small work piece diameters.



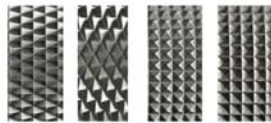
Best Example:
Zeus RD2

Tool Series:

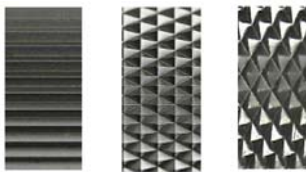
RD1



All knurling profiles possible

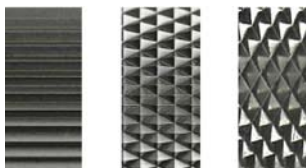


RD2



RAA
RGE30°
RGE45°

RD3



RAA
RGE30°
RGE45°

Specialty Tools

Zeus Form Knurling Wheels guarantee an optimal tool life, high precision and absolute process safety:



- **Teeth fine milled, front and bore ground:** high quality of knurling pattern
- **Vacuum hardened:** increase in tool life
- **Knurling wheel options:** PVD coatings for increased wheel life (✓)
- **Exclusive product range**



Form AA



BL 30°



BR 30°



BL 45°



BR 45°



GE 30°



GE 45°



KE

Variations	Type	Ø x width x bore			Pitch p - Profile angle a
No. 10 / milled, with chamfer, HSS ✓	AA	10	3	6	0,3 - 90°
No. 11 / milled, with chamfer, PM ✓	BL30	10	4	4 ✓	0,4 - 90°
No. 12 / milled, without chamfer, HSS ✓	BL45	15	4	4 ✓	0,5
No. 13 / milled, without chamfer, PM ✓	BR30	15	4	8	0,6
No. 30 / ground, with chamfer, PM ✓	BR45	15	6	4 ✓	0,7 - 90°
No. 32 / ground, without chamfer, PM ✓	GE30	15	6	6/8 ✓	0,8
No. 50 / ground, with chamfer, HM ✓	KE	15	6	6/11 *	0,9
No. 52 / ground, without chamfer, HM ✓		20	6	6 ✓	1,0
		20	8	6 ✓	1,2
		20	8	6/13 ✓	1,5
		20	8	10/12 ✓	1,6
		20	10	6 ✓	1,8
		25	6	6 ✓	2,0 - 90°
		25	6	8 *	cp 8 - 90°
		25	8	6 ✓	cp 10
		25	10	6 ✓	cp 12
		5/16	5/32	1/8 ✓	cp 14 - 90°
		1/2	3/16	3/16 ✓	cp 16
		1/2	1/4	3/16 ✓	cp 18
		5/8	5/16	7/32 ✓	cp 19
		5/8	1/4	1/4 ✓	cp 20 - 90°
		3/4	3/8	1/4 ✓	cp 21
		3/4	1/2	1/4 ✓	cp 24
		7/8	3/8	1/4 ✓	cp 25
		1	3/8	5/16 ✓	cp 29
		1 1/4	1/2	1/2 ✓	cp 30
					cp 32
					cp 33
					cp 35 - 70° / 90°
					cp 40 - 70° / 90°
					cp 41 - 90°
					cp 47 - 90°
					cp 50 - 70°
					cp 60 - 70°
					cp 70 - 70°
					cp 80 - 70°
					cp 90 - 70°
					cp 100 - 70°
					dp 64 - 80°
					dp 96 - 80°
					dp 128 - 80°
					dp 160 - 80°

Please choose your options by combining the four columns accordingly.

*With chanks 60° for knurling tool RD2

HSS = High Speed Cutting Steel
PM = Powder metallurgy Steel
HM = Carbide



Specialty Tools

RSVP Tooling, Inc.

Specialty Tools

Zeus Marking Tools - Turned Part Marking On (Auto) Lathe

Leave your mark with Zeus marking tools.



Unbeatable benefits:

- **Application oriented** tool solutions. Marking of work pieces on the (auto) lathe directly.
- **Customized tool** solutions. Each tool is designed according to the applications specific requirements.
- **Cost reduction.** No additional manual processing step or additional setting time required.
- **Individuality.** Branding of turned-parts with company name or logo.

Turned part marking application benefits:

- **Unique product allocation and traceability** through product identification
- **Unique supplier allocation**
- **Improved production data**
- **Branding possibilities**



Best Example:
Zeus MRSI

Tool Series:



Zeus Marking Tools - Turned Part Marking On (Auto) Lathe

Leave your mark with Zeus marking tools.



Marking Rolls:

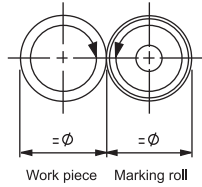
- **Customer oriented tool solutions.** Individual tool design for your specific application
- **Individual design.** Each marking roll is designed to the customer's specific requirements
- **Cost effective.** Customized solutions for standard price.

Continuous Roll Marking System:

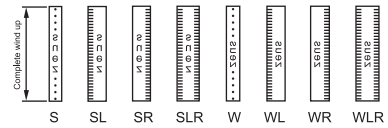


No. 40

Marking roll continuously rotating



For marking tools:
MCI - Series
MCCI - Series



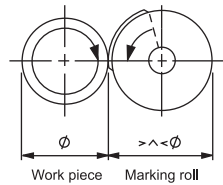
Marking types
on work piece

Spring Return Marking System:

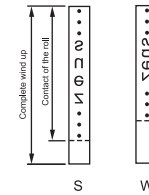


No. 41

Marking roll partially rotating



For marking tools:
MRI - Series

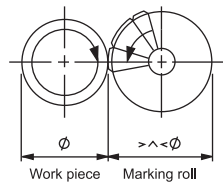


Marking types
on work piece

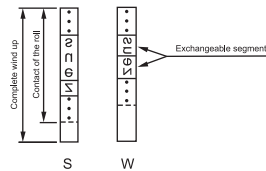


No. 41

Marking roll partially rotating



For marking tools:
MRSI - Series



Marking types
on work piece