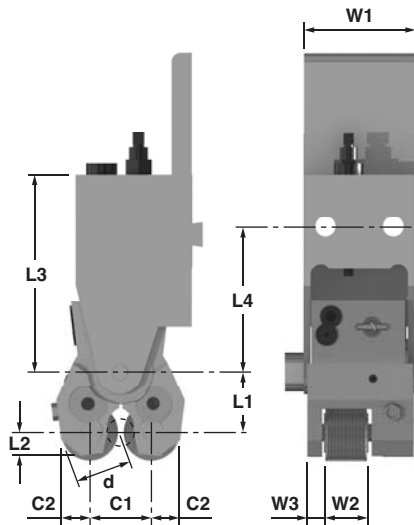


RT-30 Tangential Side Thread Rolling Attachment

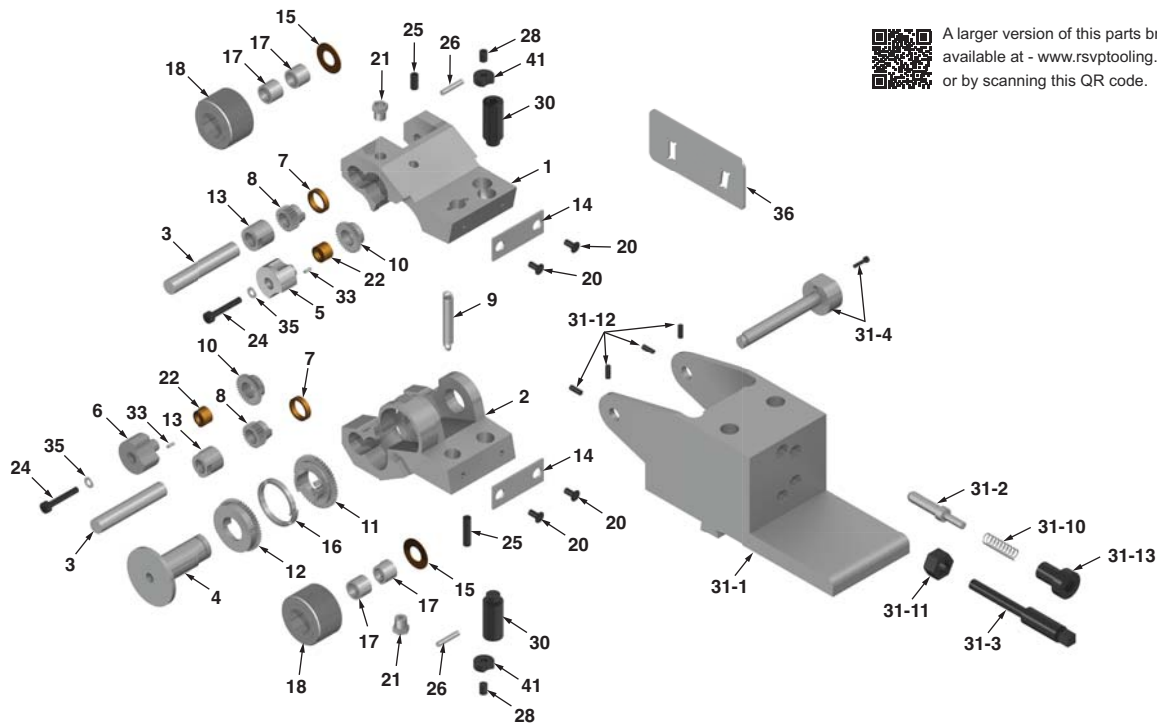


Dmax = max. shoulder diameter
 Av = Operating feed
 Dimensions above refer to cross slide mounted holder.
 Dimensions for other tool holder are adapted to the respective machine.

Roiling Attachment		RT30
W1 mm/inch		83 / 3.268
W2 mm/inch		31 / 1.22
W3 mm/inch		15.8 / 0.622
L1 mm/ Inch min./max.		43.1 / 1.697
L2 mm/inch		53.5 / 2.106
L3 mm/inch		20 / 0.787
L4 mm/inch		124 / 4.882
C1 mm/inch min./max.		59.5 / 2.343
C2 mm/inch		87 / 3.425
d mm/inch max.		28/1.102
L4		63 / 2.48
Weight Approx. (kg)	Rolling Attachment	4.9
	Rolling Attachment Holder	4.2
	Thread rolls (1 set = 2 pieces)	1.4
	Setting gauge	0.2
	Total	10.7

For left hand threads, the same rolling attachment can be used as for right hand threads. Left hand threads require left hand rolls.

Component Parts Breakdown



A larger version of this parts breakdown is available at - www.rsptooling.com/prints.html or by scanning this QR code.

Item #	EDP	Description	Qty
1	30-001	Upper Arm	1**
2	30-002	Lower Arm	1
3	30-003	Shaft	2
4	30-004	Center Shaft	1
5	30-005	Bushing	1
6	30-006	Bushing	1
7	30-007	Bearing Bushing	2
8	30-008	Pinion	2
9	30-009	Tension Spring	1
10	30-010	Gear w/Bushing	2
11	30-011	Gear (assy w/12 & 16 only)	0**
12	30-012	Gear w/Coil Spring	1
13	30-013	Carbide Bushing	2
14	30-014	Plate	2

Item #	EDP	Description	Qty
15	30-015	Thrust Washer	2
16	30-016	Coil spring (assy w/11 & 12)	1
17	30-017	Bushing	4
20	30-020	Flat Head Scr.	4
21	30-021	Grease Nipple	2
22	30-022	Bearing Bushing	2
24	30-024	Cap Screw	2
25	30-025	Cap Screw	2
26	30-026	Straight Pin	2
27	30-027	Set Screw	1
28	30-028	Set Screw	2
30	30-030	Adj. Set Screw	2
31	30-031	Attachment Holder Complete	1▼
31-1	30-031-1	Housing	1▼

Item #	EDP	Description	Qty
31-2	30-031-2	Spring Loded Bolt	1
31-3	30-031-3	Stop Bolt	1
31-4A	30-031-4A	Bolt	1
31-4B	30-031-4B	Bolt	1
31-10	30-031-10	Thrust Spring	1
31-11	30-031-11	Hex Nut	1
31-12	30-031-12	Set Screw	2
31-13	30-031-13	Cap Screw	1
32	30-032	Setting Gauge	1▼
33	30-033	Slotted Pin	2
35	30-035	Schnorr Clip	2
36	30-036	Sheet Metal Gauge	1
41	30-041	Lock Washer	2

Sold as an assembly only

▼(#1 & #2 Arm Assy) (#11,12 & 16 gear w/Coil Spring Assy)

▼ Per Application