

## GEOMETRIC CHASER System

RSVP Tooling now offers a comprehensive selection of thread cutting diehead options to consider for virtually any job lot size or application. We are proud to offer an economic solution to suit any requirement.

**D Style dieheads** are commonly used in automatic or manual operations, mounted in a fixed, stationary position in a turret or tool holder. Known as self opening type heads, they pull open when feed is stopped and are reset to the closed position by use of a reset lever actuated by hand or index of the machine.

**DJ Style dieheads** utilize the same chasers as D style heads and are made to withstand the same heavy duty applications. DJ heads are used where an opening type head is not mechanically supported or preferred. Referred to as solid adjustable type, DJ heads are suited to threading operations where reversing of the spindle is preferred such as in milling machines or lead screw controlled applications. They can be mounted in a fixed or rotating position.

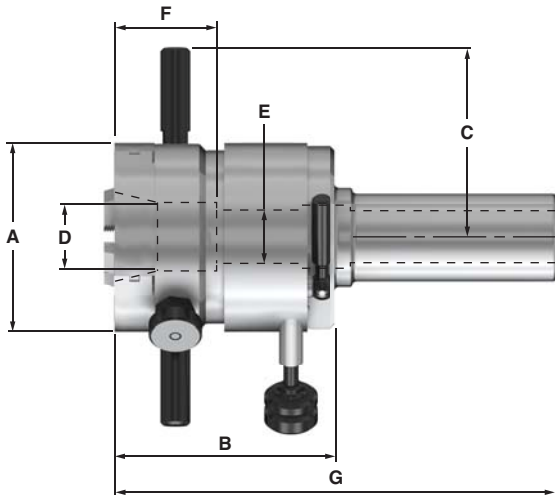
**Samn & Saman Style dieheads** are a simple, durable design offering an attractive alternative to acorn type die chasers. Their one piece construction and ample thread size range offer an economic solution for short run applications and those with limited clearance. The SAMN style heads are a basic straight shank design whereas the SAMAN heads are offered with threaded bodies to screw directly onto standard #1 through #4 acorn holders.

**Note:** As is the case with all RSVP Tooling Dieheads, we can manufacture any head with customer specific requirements such as ground pilot bore, tap adapter fitting and virtually any shank configuration.

- D-Style - Overview & Components .....23 - 24
- DJ - Overview & Components .....25
- SAMN - Overview & Components .....26
- SAMAN - Overview & Components .....27
- Geometric Chaser Specs & Terms .....28 - 29
- How To Order Geometric Chasers .....29

## D-STYLE Geometric Head

Self-Opening Stationary for Heavy Duty applications



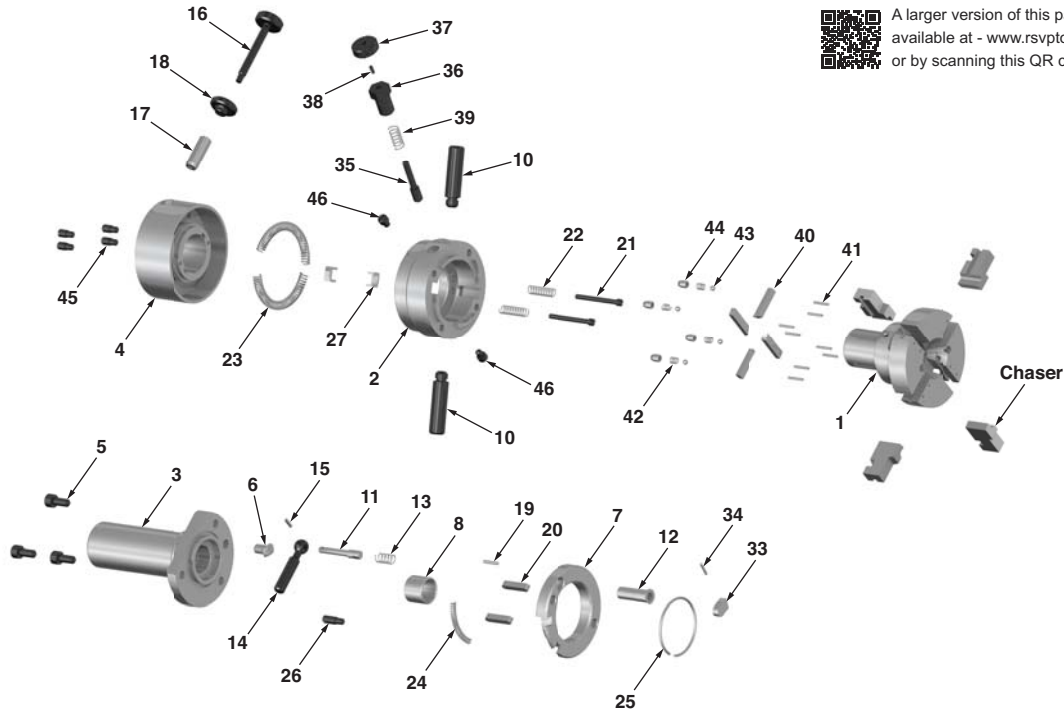
### D-Style Geometric Head Dimensions

EDP	Size of Diehead	St. Thread Capacity	Pipe Capacity	Max The Length Solid Shank*	Std Shank Dia. **
7200	5/16 D	1/16 - 5/16	16-Jan	1.31	0.63
7201	9/16 D	1/8 - 9/16	1/16 - 1/4	1.5	1
7202	3/4 D	3/16 - 3/4	1/8 - 1/2	2.38	1.5
7207	1 D	1/4/01	1/8 - 3/4	2.5	1.5
7204	1-1/4 D	1/2 - 1-1/4	1/4/01	3	1.5
7219	1-1/2 D	5/8 - 1-1/2	3/8 - 1-1/4	3.63	1.5
7220	2 D	3/4/02	1/2 - 1-1/2	4.5	2
7221	2-1/2 D	1 - 2-1/2	3/4/02	4.5	2.5

EDP	Size of Diehead	A	B	C	D	E	F	G (OAL)
7200	5/16 D	1.77	2.11	1.89	0.49	0.39	0.38	3.74
7201	9/16 D	2.44	2.06	1.63	0.88	0.63	0.56	5.65
7202	3/4 D	2.94	3	1.94	1.13	0.81	1	6.84
7207	1 D	3.56	3.25	2.25	1.38	1.06	1.19	7.41
7204	1-1/4 D	4.94	3.81	2.94	1.75	1.31	1.19	8.45
7219	1-1/2 D	5.31	4.63	3.5	2.13	1.63	1.63	
7220	2 D	6.38	5.38	4.31	2.88	2.13	1.88	
7221	2-1/2 D	6.88	5.63	4.72	3.38	2.63	1.88	

Component Parts Breakdown Next Page

## D-STYLE Component Parts Breakdown



A larger version of this parts breakdown is available at - [www.rsvptooling.com/prints.html](http://www.rsvptooling.com/prints.html) or by scanning this QR code.

Item#	Description	Unit Reqd	5/16 EDP No.	9/16 EDP No.	3/4 EDP No.	1 EDP No.	1-1/4 EDP No.	1-1/2 EDP No.	2 EDP No.	2-1/2 EDP No.
1	Body	1	D1-001	D2-001	D3-001	D4-001	D5-001	D6-001	D7-001	D8-001
2	Cam	1	D1-002	D2-002	D3-002	D4-002	D5-002	D6-002	D7-002	D8-002
3	Shank	1	D1-003	D2-003	D3-003	D4-003	D5-003	D6-003	D7-003	D8-003
4	Flange	1	D1-004	D2-004	D3-004	D4-004	D5-004	D6-004	D7-004	D8-004
5	Allen Screw	3	D1-005	D2-005	D3-005	D4-005	D5-005	D6-005	D7-005	D8-005
6	Guide Pin for Shank	1	D1-006	D2-006	D3-006	D4-006	D5-006	D6-006	D7-006	D8-006
7	Adjusting Ring	1	D1-007	D2-007	D3-007	D4-007	D5-007	D6-007	D7-007	D8-007
8	Safety Bushing	1	D1-008	D2-008	D3-008	D4-008	D5-008	D6-008	D7-008	D8-008
10	Handle	2	D1-010	D2-010	D3-010	D4-010	D5-010	D6-010	D7-010	D8-010
11	Locking Pin	1	D1-011	D2-011	D3-011	D4-011	D5-011	D6-011	D7-011	D8-011
12	Sleeve	1	D1-012	D2-012	D3-012	D4-012	D5-012	D6-012	D7-012	D8-012
13	Sleeve Spring	1	D1-013	D2-013	D3-013	D4-013	D5-013	D6-013	D7-013	D8-013
14	Locking Pin Handle	1	D1-014	D2-014	D3-014	D4-014	D5-014	D6-014	D7-014	D8-014
15	Pin for Handle	1	D1-015	D2-015	D3-015	D4-015	D5-015	D6-015	D7-015	D8-015
16	Adjusting Screw	1	D1-016	D2-016	D3-016	D4-016	D5-016	D6-016	D7-016	D8-016
17	Threaded Bushing	1	D1-017	D2-017	D3-017	D4-017	D5-017	D6-017	D7-017	D8-017
18	Lock Nut	1	D1-018	D2-018	D3-018	D4-018	D5-018	D6-018	D7-018	D8-018
19	Pin for Threaded Bshg.	1	D1-019	D2-019	D3-019	D4-019	D5-019	D6-019	D7-019	D8-019
20	Key	2	D1-020	D2-020	D3-020	D4-020	D5-020	D6-020	D7-020	D8-020
21	Return Spring Screw	2	D1-021	D2-021	D3-021	D4-021	D5-021	D6-021	D7-021	D8-021
22	Return Spring	2	D1-022	D2-022	D3-022	D4-022	D5-022	D6-022	D7-022	D8-022
23	Opening Spring	2	D1-023	D2-023	D3-023	D4-023	D5-023	D6-023	D7-023	D8-023
24	Adjusting Spring	1	D1-024	D2-024	D3-024	D4-024	D5-024	D6-024	D7-024	D8-024
25	Locking Ring	1	D1-025	D2-025	D3-025	D4-025	D5-025	D6-025	D7-025	D8-025
26	Screw for Flange	1	D1-026	D2-026	D3-026	D4-026	D5-026	D6-026	D7-026	D8-026
27	Pad for Opening Spring	2	D1-027	D2-027	D3-027	D4-027	D5-027	D6-027	D7-027	D8-027
33	Segment	1	D1-033	D2-033	D3-033	D4-033	D5-033	D6-033	D7-033	D8-033
34	Segment Pin	1	D1-034	D2-034	D3-034	D4-034	D5-034	D6-034	D7-034	D8-034
35	Indexing Pin	1	D1-035	D2-035	D3-035	D4-035	D5-035	D6-035	D7-035	D8-035
36	Indexing Sleeve	1	D1-036	D2-036	D3-036	D4-036	D5-036	D6-036	D7-036	D8-036
37	Indexing Head	1	D1-037	D2-037	D3-037	D4-037	D5-037	D6-037	D7-037	D8-037
38	Pin for In design Head	1	D1-038	D2-038	D3-038	D4-038	D5-038	D6-038	D7-038	D8-038
39	Indexing Spring	1	D1-039	D2-039	D3-039	D4-039	D5-039	D6-039	D7-039	D8-039
40	Chaser Key	4	D1-040	D2-040	D3-040	D4-040	D5-040	D6-040	D7-040	D8-040
41	Pin for Chaser Key	8	D1-041	D2-041	D3-041	D4-041	D5-041	D6-041	D7-041	D8-041
42	Pressure Nipple Spring	4	D1-042	D2-042	D3-042	D4-042	D5-042	D6-042	D7-042	D8-042
43	Ball	4	D1-043	D2-043	D3-043	D4-043	D5-043	D6-043	D7-043	D8-043
44	Pressure Nipple	4	D1-044	D2-044	D3-044	D4-044	D5-044	D6-044	D7-044	D8-044
45	Cam Screw	4	D1-045	D2-045	D3-045	D4-045	D5-045	D6-045	D7-045	D8-045
46	Screw for Body	2	D1-046	D2-046	D3-046	D4-046	D5-046	D6-046	D7-046	D8-046