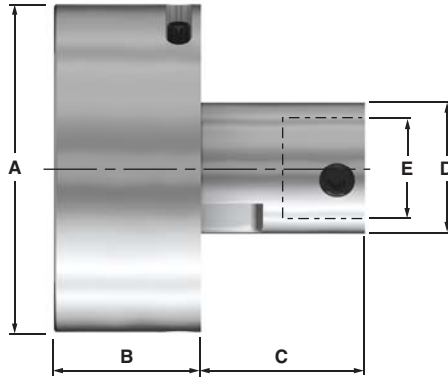


DRFSA

The DRFSA is an excellent option for machining components with interrupted features in applications where reversing of the spindle is preferred to an opening type diehead. Can be used in the same manner as rigid tapping in CNC, Milling or Rotary Transfer type machines.

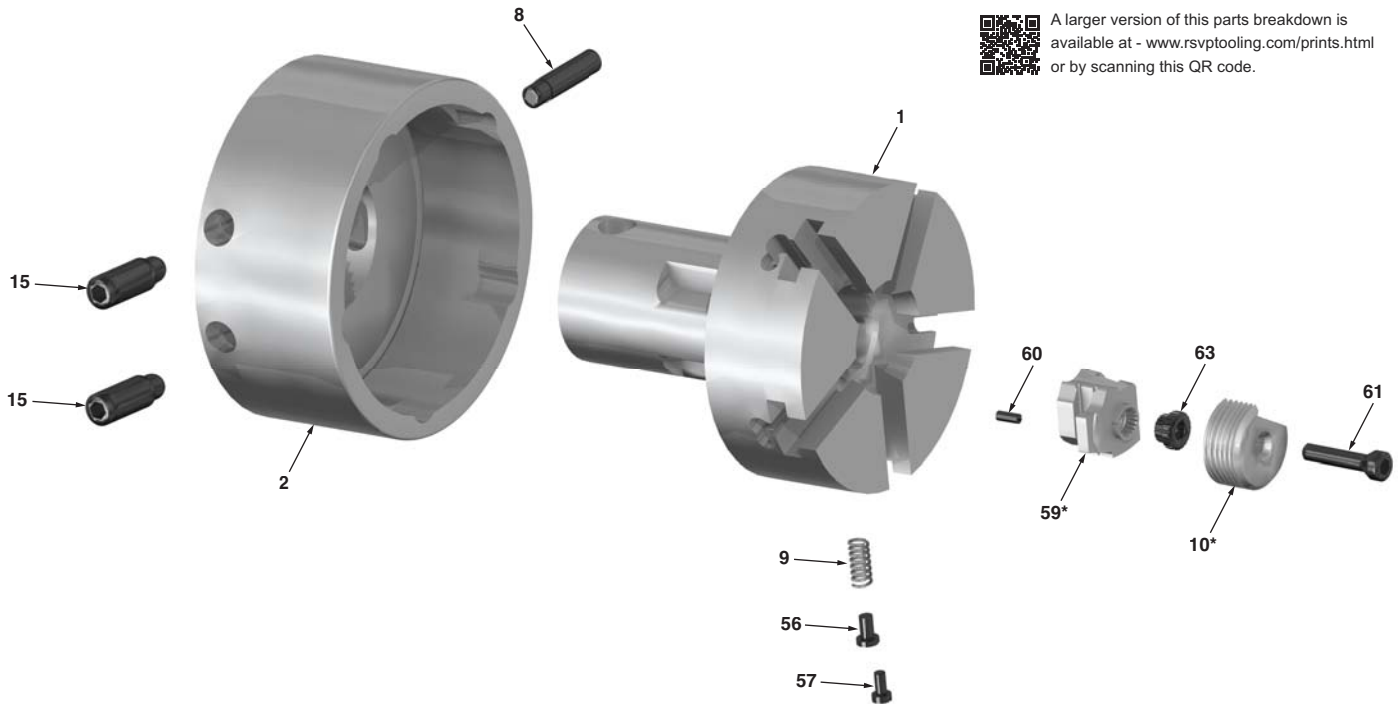
See pages 16 - 18 for available shank options.



DRFSA Circular Chaser Head Dimensions

EDP	Size of Head	Straight Threads Inches	A	B	C	D	E	
7092 SA	13/16	.250-.562	IN.	3.63	1.63	2.03	1.5	0.93
7085 SA	1	.250-.812	IN.	4.06	1.86	2	1.63	1.1
7089 SA	1-5/8	.500-1.062	IN.	4.88	1.89	2.38	2.75	1.1
7093 SA	2-3/8	1.00-2.375	IN.	6	2.56	3.75	2.75	1.75

Component Parts Breakdown



A larger version of this parts breakdown is available at - www.rsvptooling.com/prints.html or by scanning this QR code.

Part#	Description	Unit Reqd	13/16"	1"	1-5/8"	2-3/8"
			No.	EDP No.	EDP No.	EDP No.
DRFSA-1A	Body Assy	1	2914M-SA	2905M-SA	2923M-SA	2934M-SA
DRFSA-2	Diecup	1	2915 SA	2916 SA	2924 SA	2935 SA
DRSFA-8	Cup Rtnr Screw	1	1726	1727	1727	1728
DR-9	Chaser Spring	5	3080	3080	3046	3046
DR-15	Adjusting Screw	2	3045	3045	3045	3045
DR-56	Spring plunger for DR-9	5	3247	3247	3252	3255
DR-57	Spring plunger screw	5	3080	3080	3046	3046
DR-60	Pin in block	5	3045	3045	3045	3045
DR-61	Chaser screw	**	**	**	**	**
DR-63	Serrated brushing	**	**	**	**	**

* See pages 21-22 for available standard block and chaser sizes.

** See Page 19