

DS Self Opening Stationary Dieheads

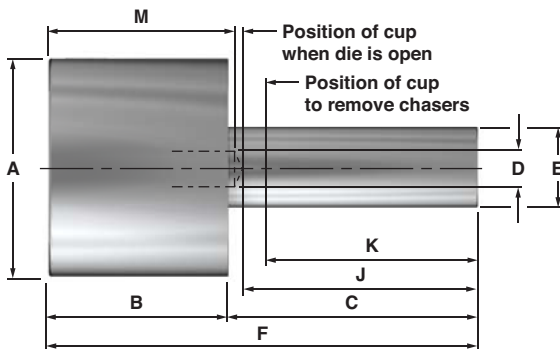
The style DS diehead is specially designed for use on turret and capstan lathes. It is quickly adaptable for straight, taper, right hand and left hand threads or hollow milling.

The head is specially suitable for close to shoulder threads as the chasers move back from the shoulder immediately when the diehead opens.

The head is equipped with a lateral compensating float. Chasers and chaser blocks may be released simply by pulling up the handle and sliding back the cup unit. Chasers are interchangeable with DR, DBS and DRD heads of the same capacity.



DS Circular Chaser Head Dimensions



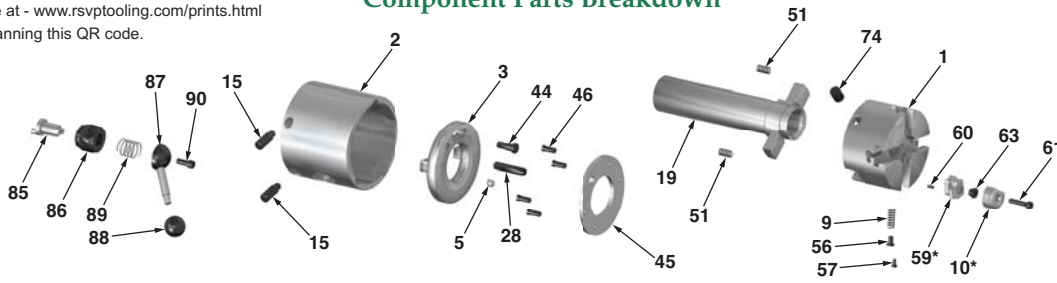
EDP	Size of Diehead	Straight Threads Inches	A	B	C	D
7012	3/8	.188-.375	IN. 2.63	2.13	3.69	0.56
7013	9/16	.250-.562	IN. 2.88	2.84	3.78	0.63
7014	13/16	.250-.812	IN. 3.63	3.19	4.63	0.88
7015	1	.375-1.000	IN. 4.06	3.34	4.63	1.06
7016	1-5/8	.500-1.625	IN. 4.88	3.84	5.78	1.69

EDP	Size of Diehead	Plus E	F	J	K	M
7012	3/8	1	5.78	3.47	3	1.99
7013	9/16	1.5	6.70	3.53	3	2.88
7014	13/16	1.5	7.80	4.28	3.75	3.13
7015	1	1.5	7.94	4.28	3.75	3.28
7016	1-5/8	2.13	9.83	5.41	4.75	3.81



A larger version of this parts breakdown is available at - www.rsvptooling.com/prints.html or by scanning this QR code.

Component Parts Breakdown



Part#	Description	3/8"		9/16"		13/16"		1"		1-5/8"	
		Unit Reqd	EDP No.	Unit Reqd	EDP No.	Unit Reqd	EDP No.	Unit Reqd	EDP No.	Unit Reqd	EDP No.
DS-1A	Body assembly	1	2983	1	2980	1	2963	1	2972	1	2925
DS-2A	Cup assembly	1	2984	1	2981	1	2964	1	2973	1	2926
DS-3A	Adjusting plate assembly	1	2985	1	2982	1	2965	1	2968	1	2927
DS-5	Stop pin	1	3025	1	3025	1	3029	1	3029	1	3029
DS-9	Chaser spring	4	3226	4	3233	4	3239	4	3244	4	3244
DS-9HD	Chaser spring HD	4	3233	4	3227	4	3250	4	3240	4	3240
DS-15	Adjusting screw in DS-2	2	3026	2	3022	2	3030	2	3027	2	3031
DS-19	Shank	1	3064	1	3053	1	3061	1	3057	1	3155
DS-28	Guide pin DS-3A	1	3173	1	3170	1	3102	1	3102	1	3172
DS-44	Adjusting plate screw	1	3036	1	3036	1	3037	1	3037	1	3037
DS-45	Spring plate	1	3065	1	3054	1	3062	1	3058	1	3067
DS-46	Spring plate screw	4	3038	4	3039	4	3039	4	3039	4	3040
DS-51	Shank pull back spring	2	3041	2	3232	2	3238	2	3238	2	3243
DS-56	Spring plunger for DS-9	4	3080	4	3080	4	3080	4	3046	4	3046
DS-57	Spring plunger screw	4	3045	4	3045	4	3045	4	3045	4	3045
DS-60	Pin in block	4	3247	4	3247	4	3247	4	3252	4	3255
DS-61	Chaser screw	4	**	4	**	4	**	4	**	4	**
DS-63	Serrated bushing	4	**	4	**	4	**	4	**	4	**
DS-74A	Float bushing assembly	1	2953	1	2953	1	2908	1	2908	1	2922
DS-85	Reset cam only	1	3169	1	3108	1	3110	1	3110	1	3112
DS-85A	Reset cam assembly	1	2901	1	2902	1	2903	1	2903	1	2904
DS-86	Cam holder	1	3107	1	3109	1	3111	1	3111	1	3113
DS-87	Reset handle	1	3168	1	3168	1	3166	1	3166	1	3149
DS-87S	Straight line closing lever	-	-	-	-	1	3017	1	3017	1	3016
DS-88	Handle ball	1	3096	1	3096	1	3096	1	3096	1	3097
DS-R9	Reset cam spring	1	3105	1	3104	1	3106	1	3106	1	3103
DS-90	Handle screw	1	3248	1	3248	1	3257	1	3257	1	3258

* See pages 21-22 for available standard block and chaser sizes.

** See Page 19